

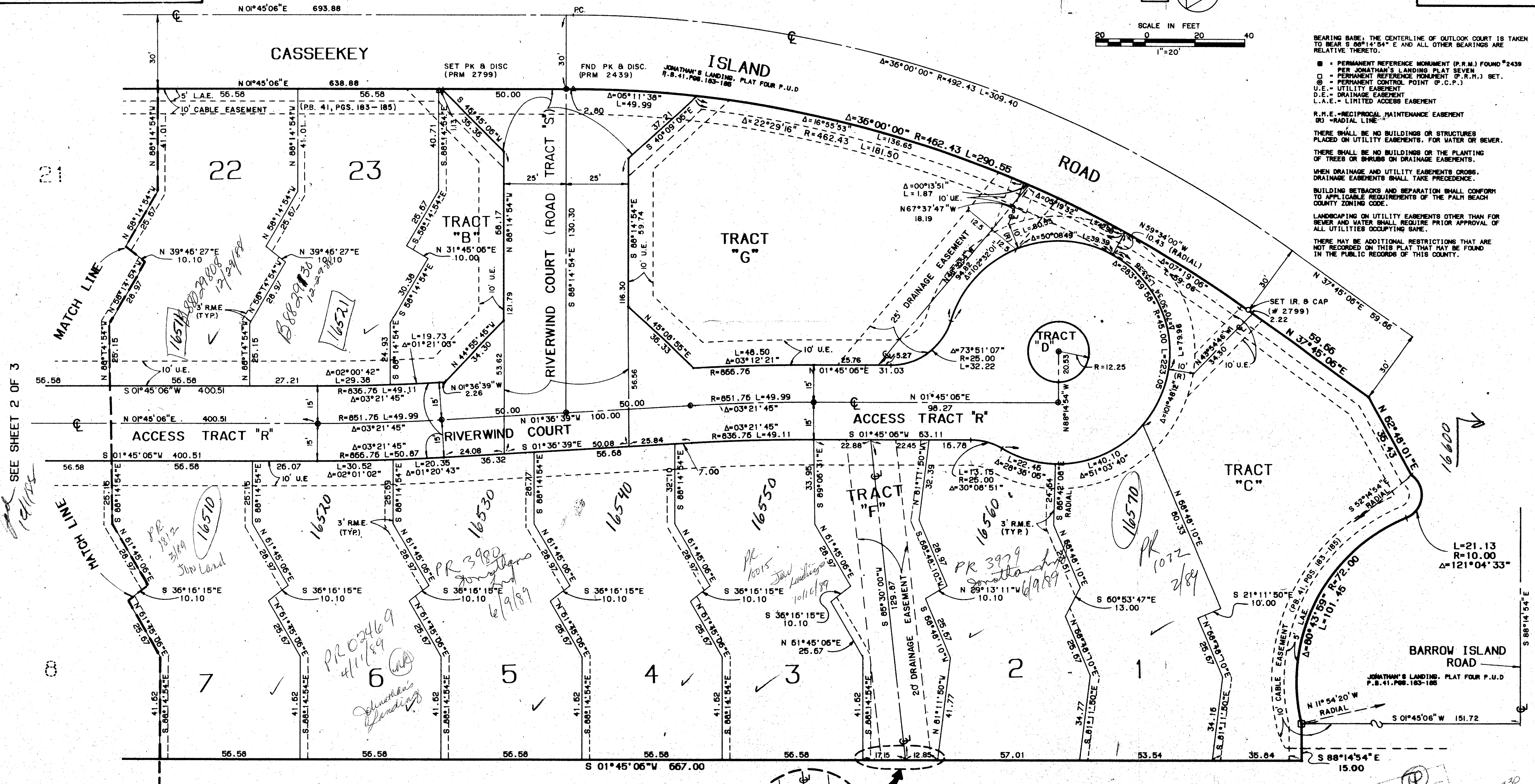
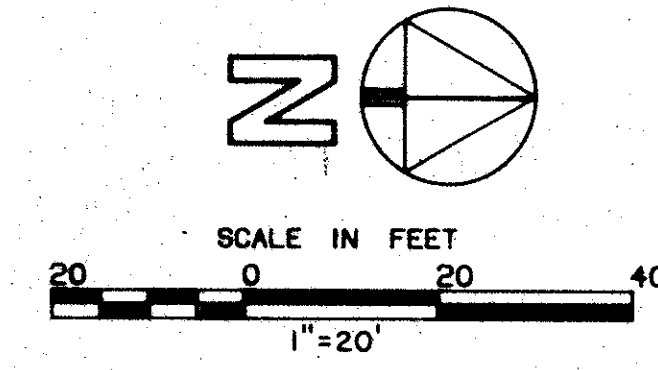
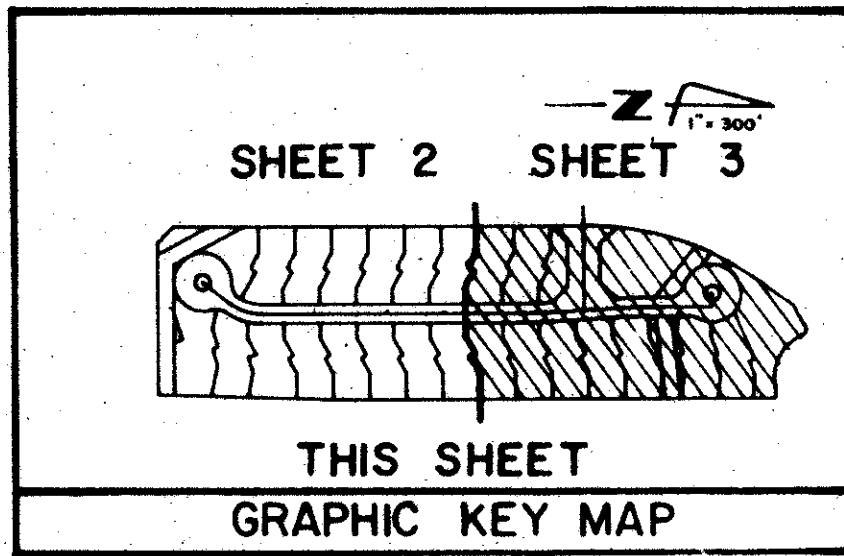
JUNE, 1988

7

A PLAT OF RIVERWIND AT JONATHAN'S LANDING P.U.D.

LYING IN SECTION 7, TOWNSHIP 41 S., RANGE 43 E.,
ALSO BEING A REPLAT OF PARCEL "M"
JONATHAN'S LANDING PLAT SEVEN P.U.D.,
AS RECORDED IN PLAT BOOK 47, PAGES 51 AND 52,
PUBLIC RECORDS OF PALM BEACH COUNTY, FLORIDA.

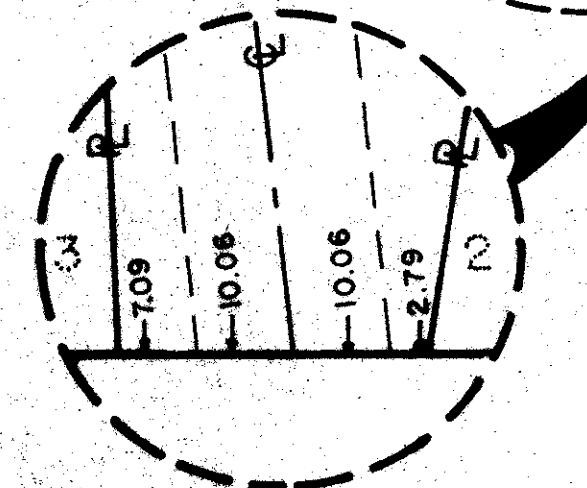
SHEET 3 OF 3



Riverwind
60
7
1075
RM 74-195
179-230
11
33
468
Jonathan's Landing
7/4/73
T.A.Z. 45

SEE SHEET 2 OF 3

FW 3
JONATHAN'S LANDING
PLAT SEVEN
P.B. 47, PGS. 51-52



THIS INSTRUMENT WAS PREPARED BY:
VINCENT J. ROHL, P.L.S.
FOR LINDAL, BROWNING, FERRARI
& HELLSTROM, INC.
210 JUPITER LANE BOULEVARD
BUILDING 5000, SUITE 104
JUPITER, FLORIDA 33458

LINDAL, BROWNING, FERRARI & HELLSTROM
Consulting Engineers, Planners & Surveyors
BLDG. 5000, SUITE 104
210 JUPITER LANE BLVD.
JUPITER, FL 33458
10 CENTRAL PARKWAY
SUITE 400
STUART, FL 33497

3 3